

**ATTACHMENT VI-1**  
**LANDFILL DRAWINGS AND SPECIFICATIONS**

## LANDFILL DRAWINGS

Cell 4 Plan View Sections

Cell 4 Cross Sections

Cell 5 Plan View Sections

Cell 5 Cross Sections

Cell B/6 Plan View Sections

Cell B/6 Cross Sections

Note that waste and cap elevations shown in shadow lines on the drawing are only illustrative of the shape of the waste mound and cap at closure.

Cell 7 Plan View Sections

Cell 7 Cross Sections

Note that waste and cap elevations shown in shadow lines on the drawing are only illustrative of the shape of the waste mound and cap at closure.

EXISTING OVERHEAD ELECTRIC GATE

EXISTING ACCESS ROAD TO INDUSTRIAL WASTE LANDFILL CELL NO. 1

EXISTING 6-FOOT CHAIN LINK FENCE

EXISTING EXTERIOR RUN-ON DRAINAGE DITCH

EXISTING CONTAINMENT DIKE

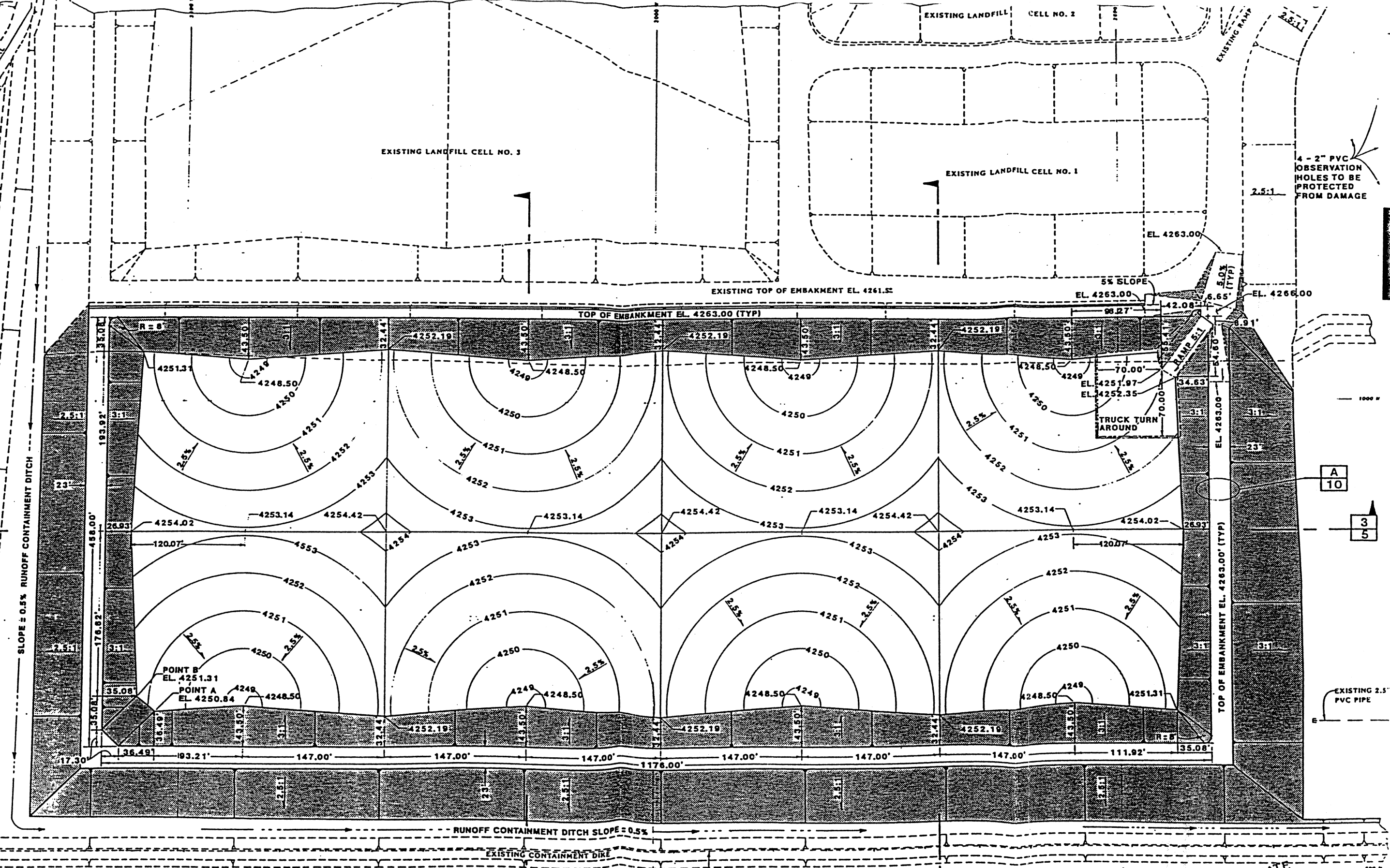
EXISTING 2.5" PVC PIPE

EXISTING LANDFILL CELL NO. 3

EXISTING LANDFILL CELL NO. 2

EXISTING LANDFILL CELL NO. 1

4 - 2" PVC OBSERVATION HOLES TO BE PROTECTED FROM DAMAGE



NOTE:  
ELEVATIONS ARE TOP OF  
SOIL PROTECTIVE COVER  
TERTIARY LINER.

APPROXIMATE  
HALF-SCALE  
REDUCTION

**HA&L ENGINEERING**

DESIGNED	MPW
DRAFTED	DRB
CHECKED	MEA
BY	APPROVED
DATE	DATE

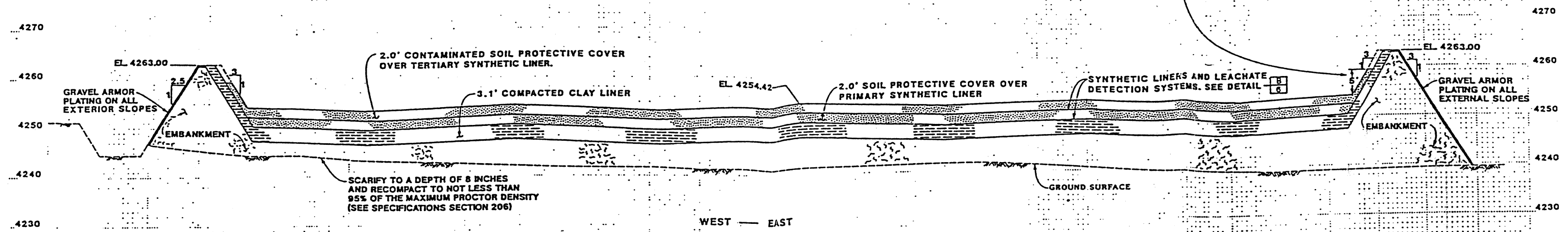
MARVIN E. ALLEN  
PROJECT ENGINEER  
LICENSE NO. 6292

SCALE  
1" = 50'

**HA&L ENGINEERING, INC.**  
CONSULTANTS / ENGINEERS  
SALT LAKE CITY, UTAH

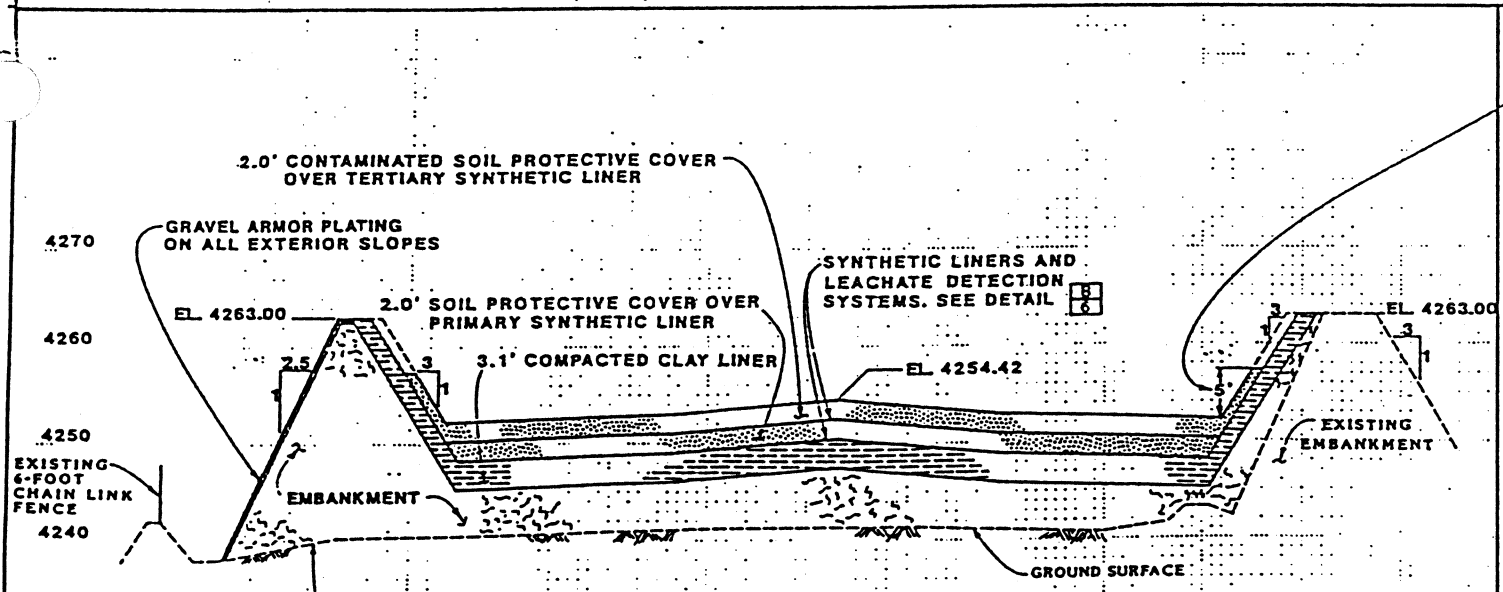
USPCI GRASSY MOUNTAIN FACILITY  
LANDFILL CELL NO. 4  
PLAN VIEW

SHEET NO. 4  
OF 12



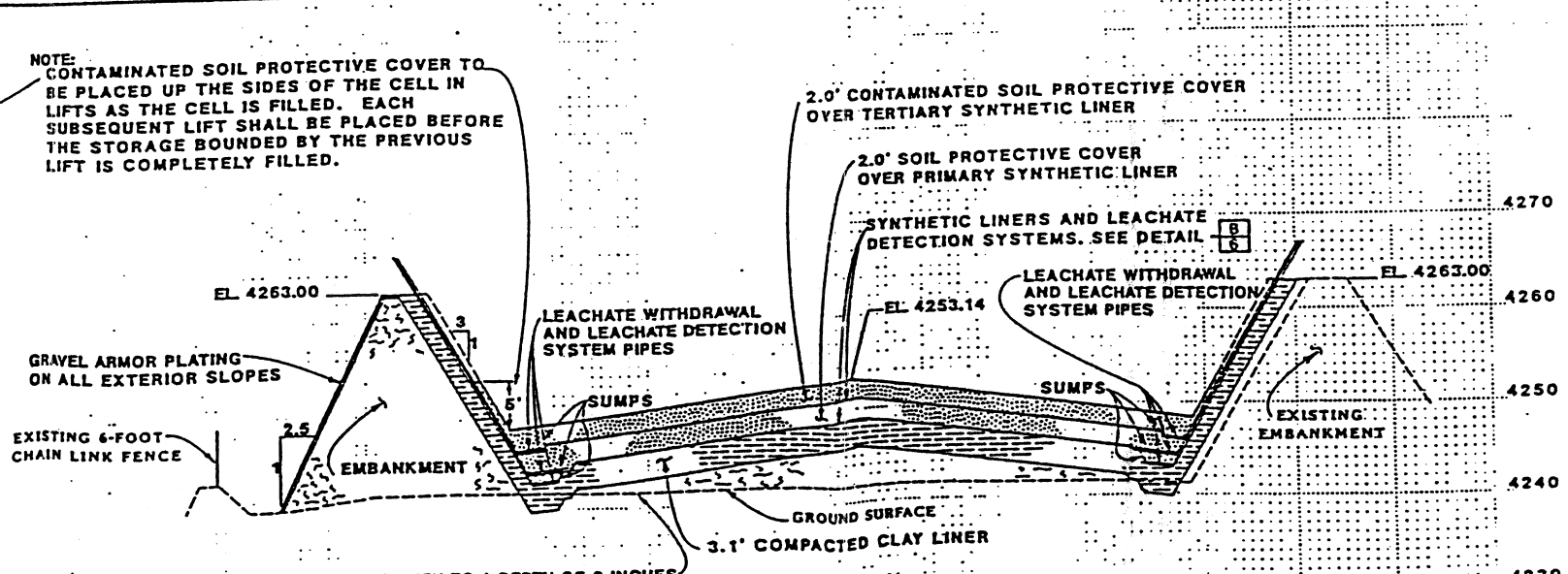
NOTE: CONTAMINATED SOIL PROTECTIVE COVER TO BE PLACED UP THE SIDES OF THE CELL IN LIFTS AS THE CELL IS FILLED. EACH SUBSEQUENT LIFT SHALL BE PLACED BEFORE THE STORAGE BOUNDED BY THE PREVIOUS LIFT IS COMPLETELY FILLED.

SECTION 3  
860 N 4



NOTE: CONTAMINATED SOIL PROTECTIVE COVER TO BE PLACED UP THE SIDES OF THE CELL IN LIFTS AS THE CELL IS FILLED. EACH SUBSEQUENT LIFT SHALL BE PLACED BEFORE THE STORAGE BOUNDED BY THE PREVIOUS LIFT IS COMPLETELY FILLED.

SOUTH — NORTH  
SECTION 4  
2698 W 4

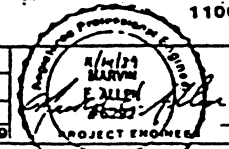


SCARIFY TO A DEPTH OF 8 INCHES AND RECOMPACT TO NOT LESS THAN 95% OF THE MAXIMUM PROCTOR DENSITY (SEE SPECIFICATIONS SECTION 206)

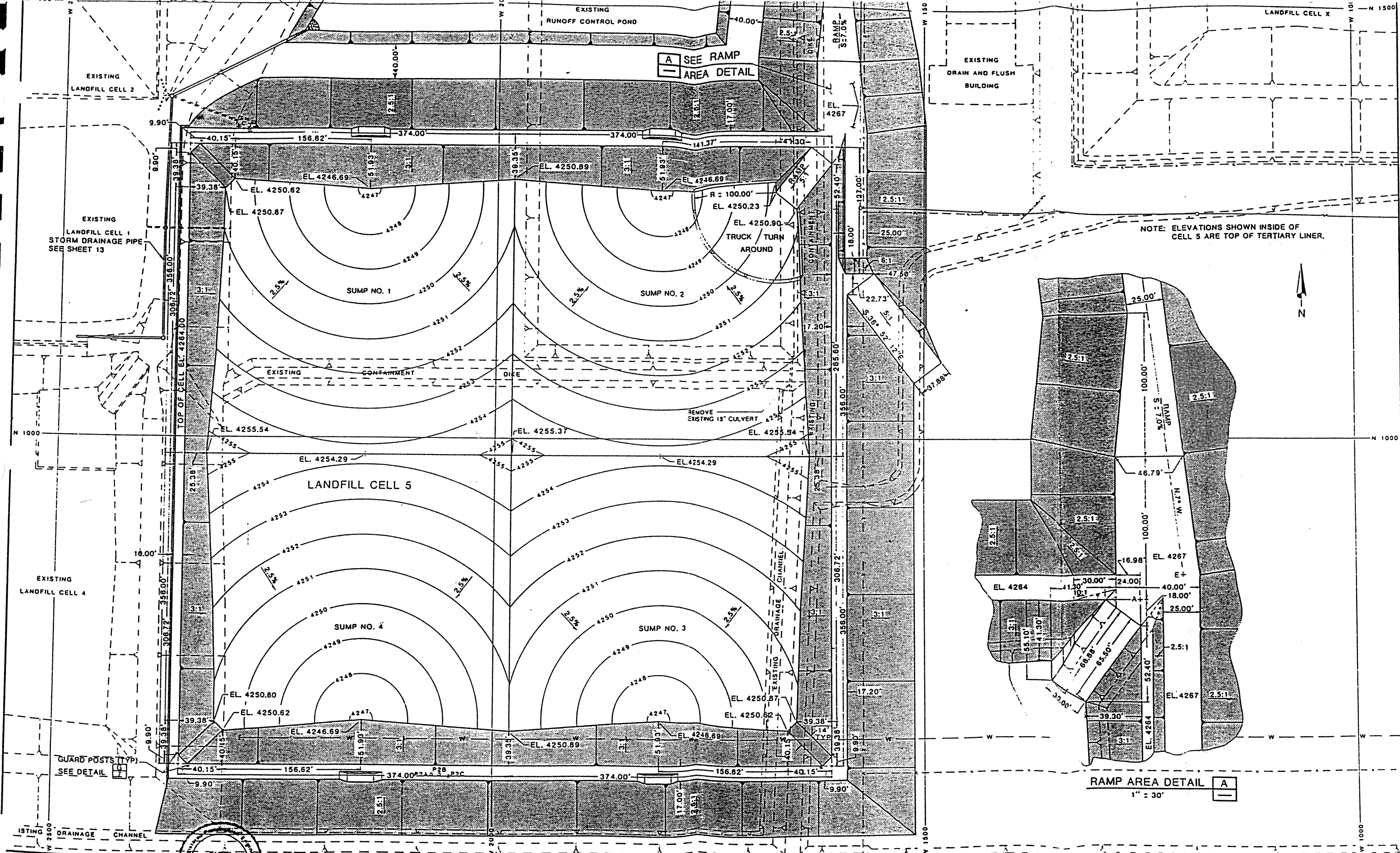
SOUTH — NORTH  
SECTION 5  
3139 W 4

APPROXIMATE HALF-SCALE REDUCTION

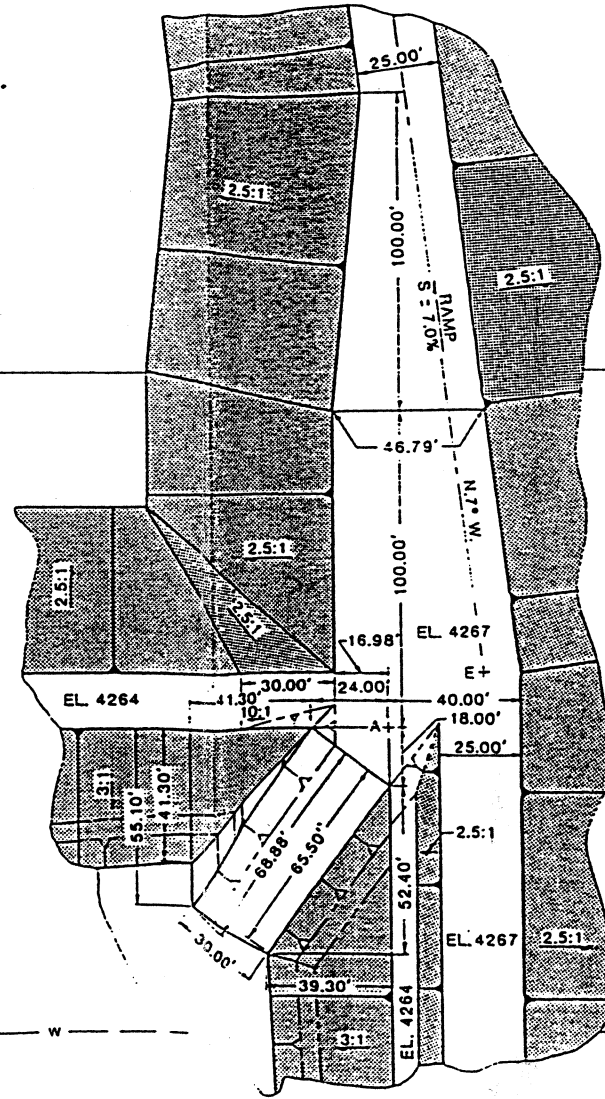
DESIGNED	MPW
DRAFTED	JVH
CHECKED	MEA
BY	APPROV. DATE APR., 1989



SCALE  
1" = 10'  
1" = 50'



NOTE: ELEVATIONS SHOWN INSIDE OF CELL 5 ARE TOP OF TERTIARY LINER.



RAMP AREA DETAIL A  
1" = 30'

**HA&L ENGINEERING**  
CONSULTANTS ENGINEERS  
SALT LAKE CITY, UTAH

DESIGNED	MPW	3	
DRAFTED	DRB	2	
CHECKED	MEA	1	
DATE	APRIL, 1990	NO.	DATE

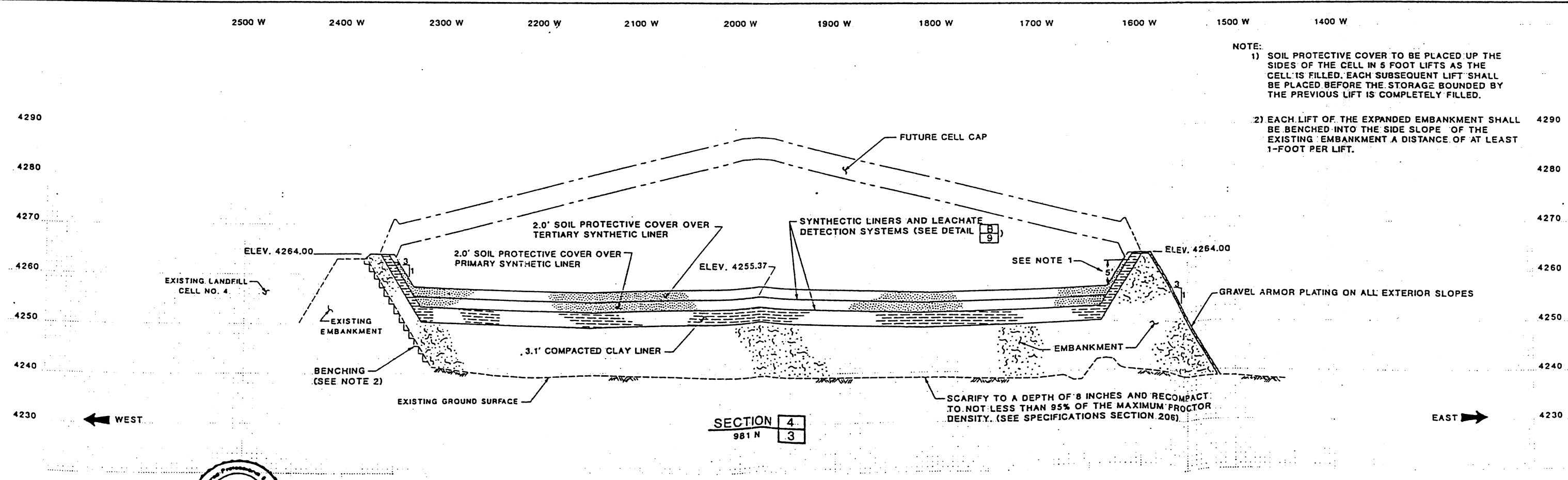
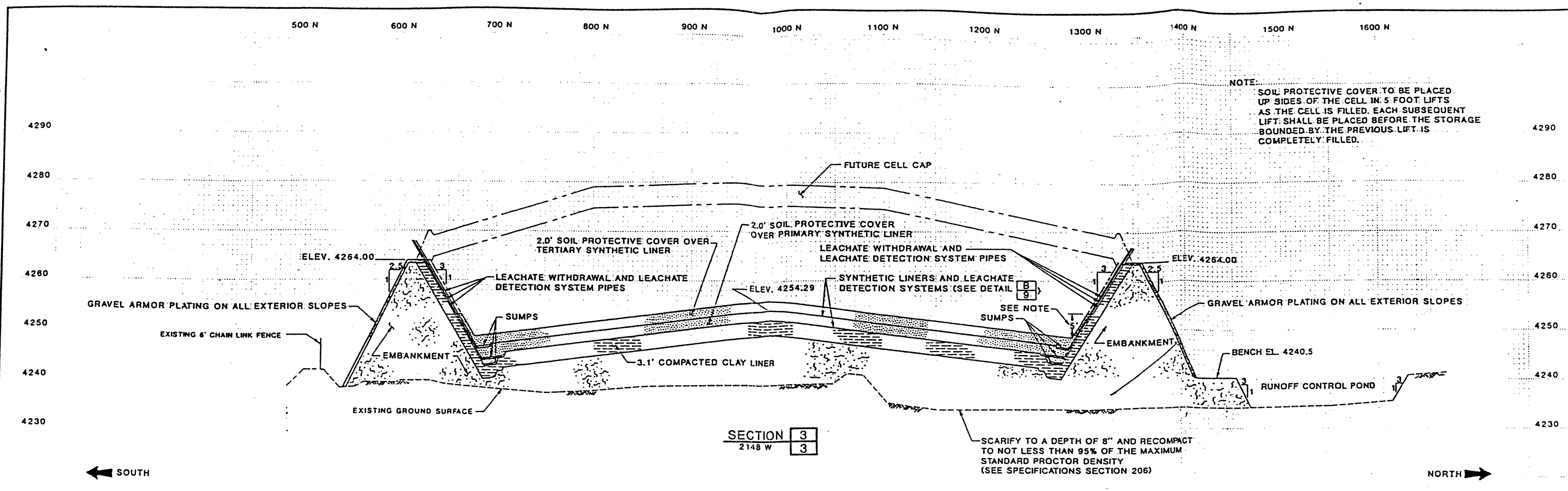
SCALE  
1" = 50'

VERIFY SCALE  
0" = 1" IS ONE INCH ON ORIGINAL DRAWING IF NOT ONE INCH ON THIS SHEET ADJUST SCALE ACCORDINGLY



GRASSY MOUNTAIN FACILITY  
LANDFILL CELL 5  
PLAN VIEW

SHEET NO. 4  
OF 16  
64-23-100  
64.23.100.00



**HA&L ENGINEERING**  
CONSULTANTS ENGINEERS  
SALT LAKE CITY, UTAH

DESIGNED MPW  
DRAFTED JVH  
CHECKED MEA  
DATE APRIL, 1990

DESIGNED	MPW	3			
DRAFTED	JVH	2			
CHECKED	MEA	1			
DATE	APRIL, 1990	NO.	1	DATE	
REVISIONS			NO.	DATE	
			BY	DATE	

SCALE  
1" = 10' V  
1" = 50' H

VERIFY SCALE  
0" = 1" V  
1" = 10' H  
IF NOT ONE INCH ON ORIGINAL DRAWING, ADJUST SCALES ACCORDINGLY



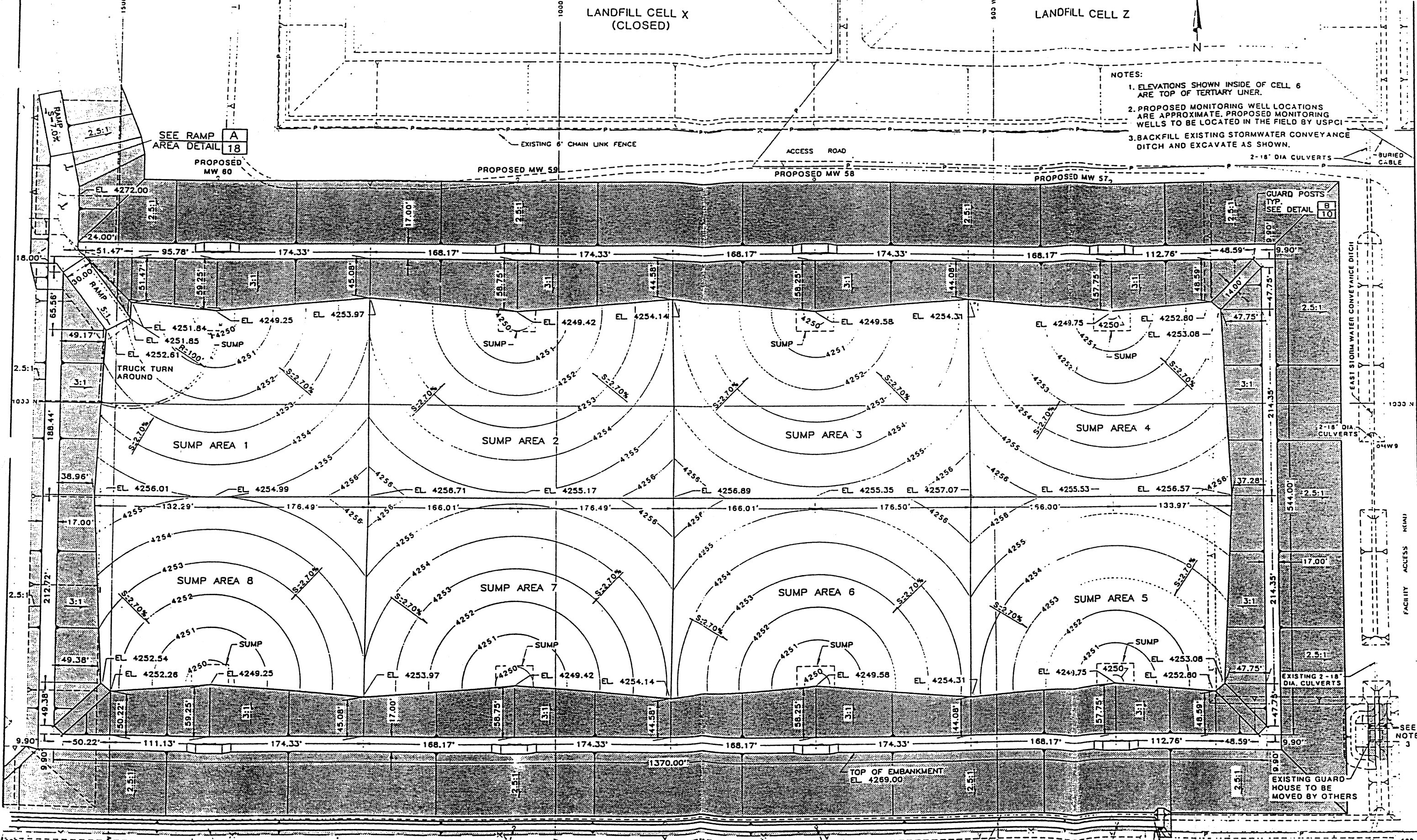
GRASSY MOUNTAIN FACILITY  
LANDFILL CELL NO. 5  
SECTIONS

SHEET NO. 5  
OF 16  
64-23-100

LANDFILL CELL X  
(CLOSED)

LANDFILL CELL Z

- NOTES:
1. ELEVATIONS SHOWN INSIDE OF CELL 6 ARE TOP OF TERTIARY LINER.
  2. PROPOSED MONITORING WELL LOCATIONS ARE APPROXIMATE. PROPOSED MONITORING WELLS TO BE LOCATED IN THE FIELD BY USPCI.
  3. BACKFILL EXISTING STORMWATER CONVEYANCE DITCH AND EXCAVATE AS SHOWN.



PROPOSED MW 53      PROPOSED MW 54      EXISTING CHAIN LINK FENCE      SOUTH STORMWATER CONVEYANCE DITCH      PROPOSED MW 55      PROPOSED MW 56      24" DIA. ADS CULVERT      2-18" DIA. CULVERTS

**HA&L ENGINEERING**  
CONSULTANTS ENGINEERS  
Salt Lake City Utah

DESIGNED MPW 3  
DRAFTED DRB 2  
CHECKED MEA 1  
DATE DEC. 1991 NO. DATE

REVISIONS	NO.	DATE

SCALE  
1" = 50'

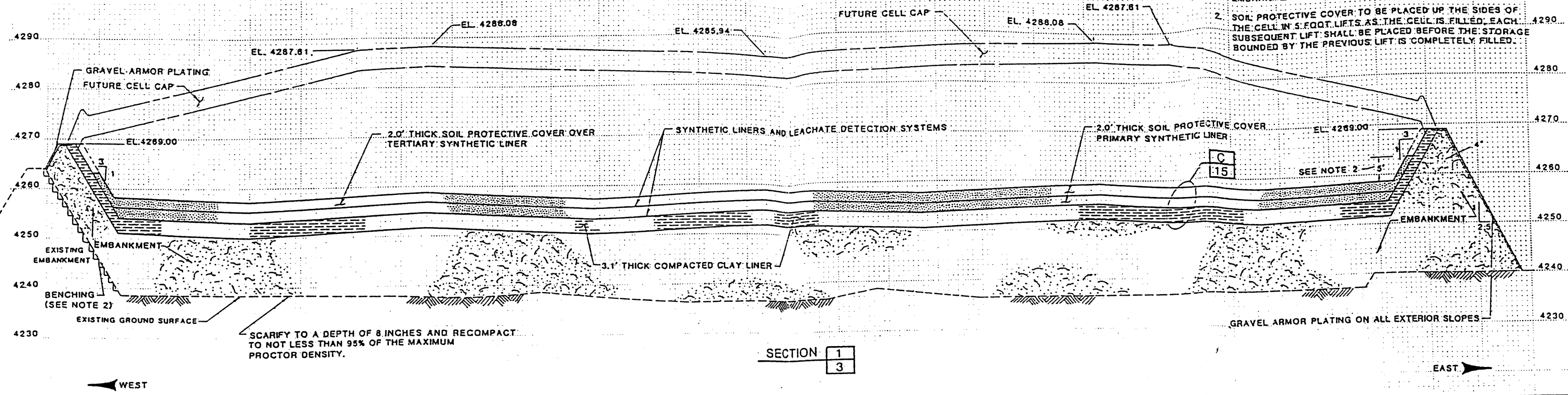
VERIFY SCALE  
OF DRAWING 1"  
BAR IS ONE INCH ON  
ORIGINAL DRAWING  
IF NOT ONE INCH ON  
THIS SHEET, ADJUST  
SCALE APPROPRIATE

**USPCI**  
A Subsidiary  
Union Pacific Corporation

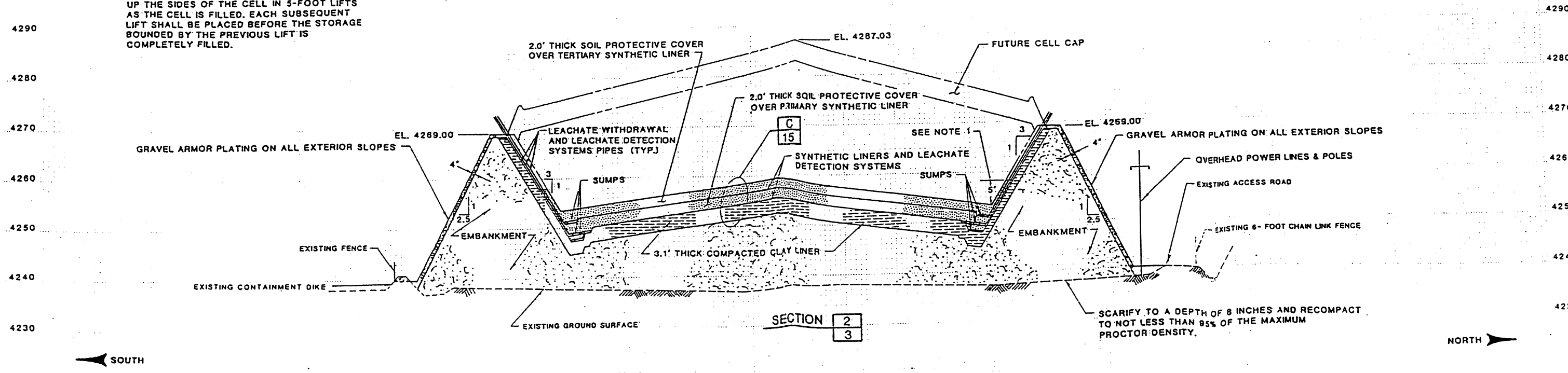
GRASSY MOUNTAIN FACILITY  
LANDFILL CELL 6  
PLAN VIEW

SHEET NO.  
4  
OF 19  
64-26-100

- NOTES:
1. EACH LIFT OF THE EXPANDED EMBANKMENT SHALL BE BENCHED INTO THE SIDE SLOPE OF THE EXISTING EMBANKMENT A DISTANCE OF AT LEAST 1- FOOT PER LIFT.
  2. SOIL PROTECTIVE COVER TO BE PLACED UP THE SIDES OF THE CELL IN 5-FOOT LIFTS AS THE CELL IS FILLED. EACH SUBSEQUENT LIFT SHALL BE PLACED BEFORE THE STORAGE BOUNDED BY THE PREVIOUS LIFT IS COMPLETELY FILLED.



- NOTE:
1. SOIL PROTECTIVE COVER TO BE PLACED UP THE SIDES OF THE CELL IN 5-FOOT LIFTS AS THE CELL IS FILLED. EACH SUBSEQUENT LIFT SHALL BE PLACED BEFORE THE STORAGE BOUNDED BY THE PREVIOUS LIFT IS COMPLETELY FILLED.



**H&L ENGINEERING**  
CONSULTANTS ENGINEERS  
Salt Lake City, Utah

REGISTERED PROFESSIONAL ENGINEER  
No. 6292  
Murray E. Allen

DESIGNED	MPW	3	
DRAFTED	B.M.	2	
CHECKED	MEA	1	
DATE	DEC. 1991	NO.	DATE

REVISIONS

SCALE  
1" = 10' V  
1" = 50' H

VERIFY SCALE  
0" = 1" V  
0" = 50' H  
BAR IS ONE INCH ON ORIGINAL DRAWING. IF NOT ONE INCH ON THIS SHEET, ADJUST SCALES ACCORDINGLY.



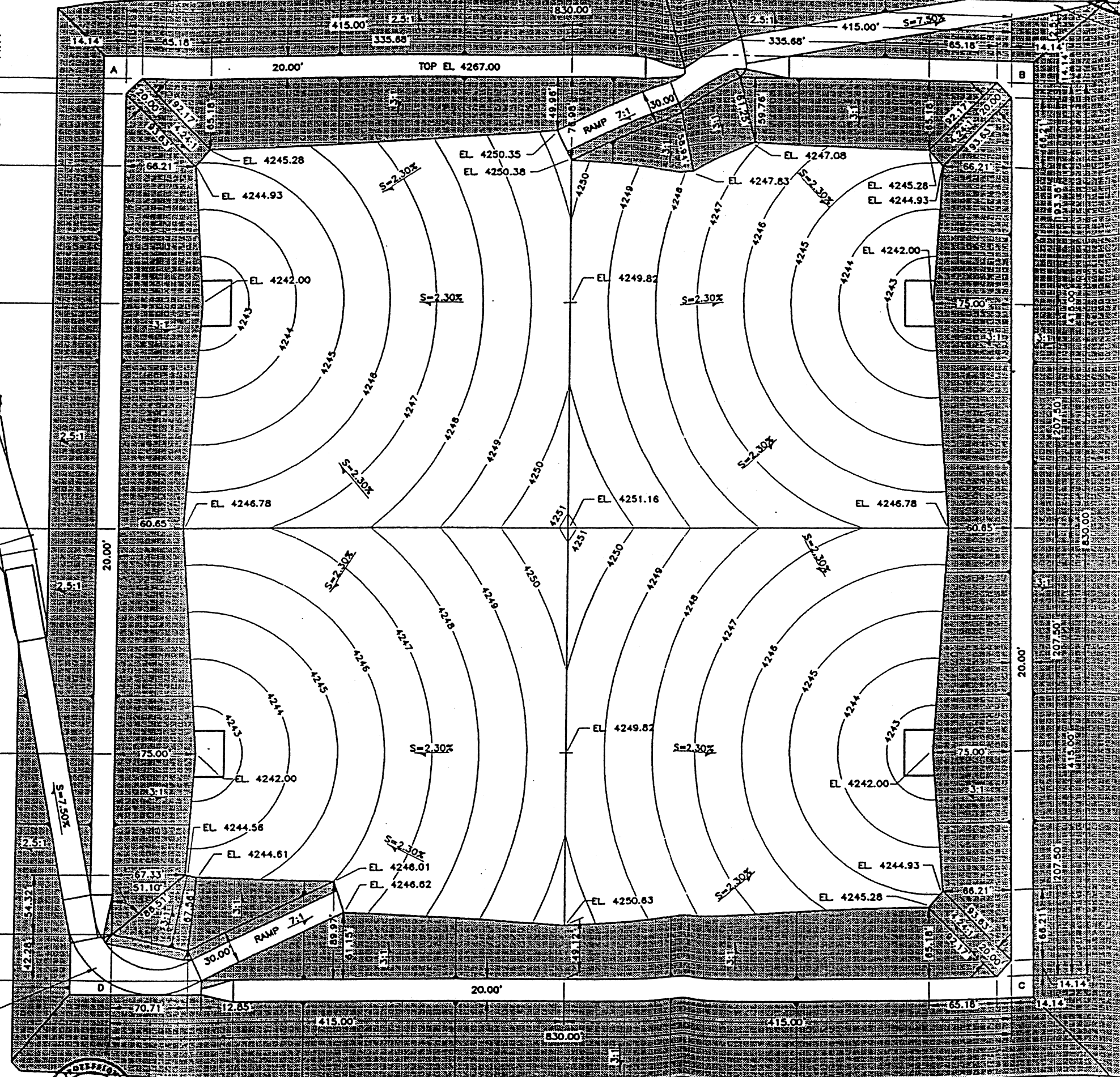
GRASSY MOUNTAIN FACILITY  
LANDFILL CELL 6  
SECTIONS

SHEET NO. 5  
OF 19  
84-26-100  
64.25.100.005



FILE C:\OSG\46-100\CAD\ME\W1.DWG PLOT III = DWG UNITS: 1-50 PLOT AREA: 13.1983  
 FILE C:\FILES\064\56-100\CAD\G77B.DWG PLOT III = DWG UNITS: 1-50 PLOT AREA: 13.1983

SEE SHEET B FOR DIMENSIONS OF SOUTHWEST RAMP



SEE SHEET 7 FOR DIMENSIONS FOR NORTHEAST RAMP

COORDINATE TABLE			
POINT NO.	NORTHING	EASTING	ELEV.
A	N. 390.00	W. 3680.00	4267.00
B	N. 390.00	W. 2850.00	4267.00
C	S. 440.00	W. 2850.00	4267.00
D	S. 440.00	W. 3680.00	4267.00



NOTE:  
ELEVATIONS SHOWN INSIDE OF CELL ARE TOP OF TERTIARY LINER.

**H&L ENGINEERING**  
CONSULTANTS ENGINEERS  
Salt Lake City, Utah



DESIGNED	MPW	3	
DRAFTED	MPW	2	
CHECKED	MEA	1	
DATE	DEC. 1995	NO.	DATE

REVISIONS

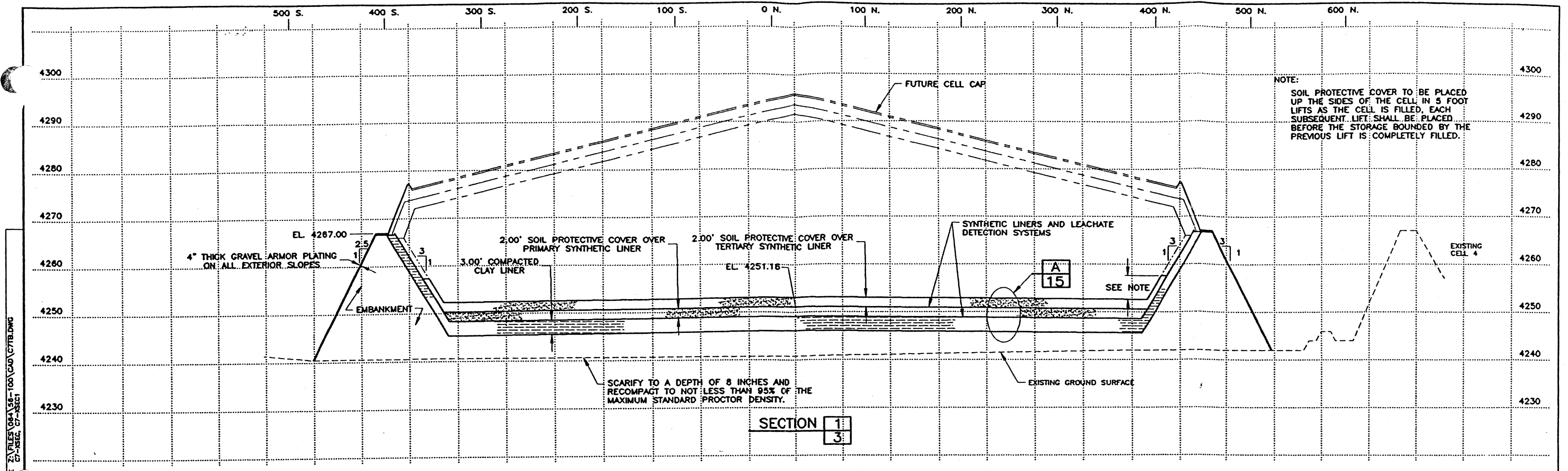
SCALE  
1"=50'

VERIFY SCALE  
1"=50'  
BAR IS ONE INCH ON GRAPH. DIMENSIONS ON THIS SHEET ARE ON SCALES ACCORDINGLY.

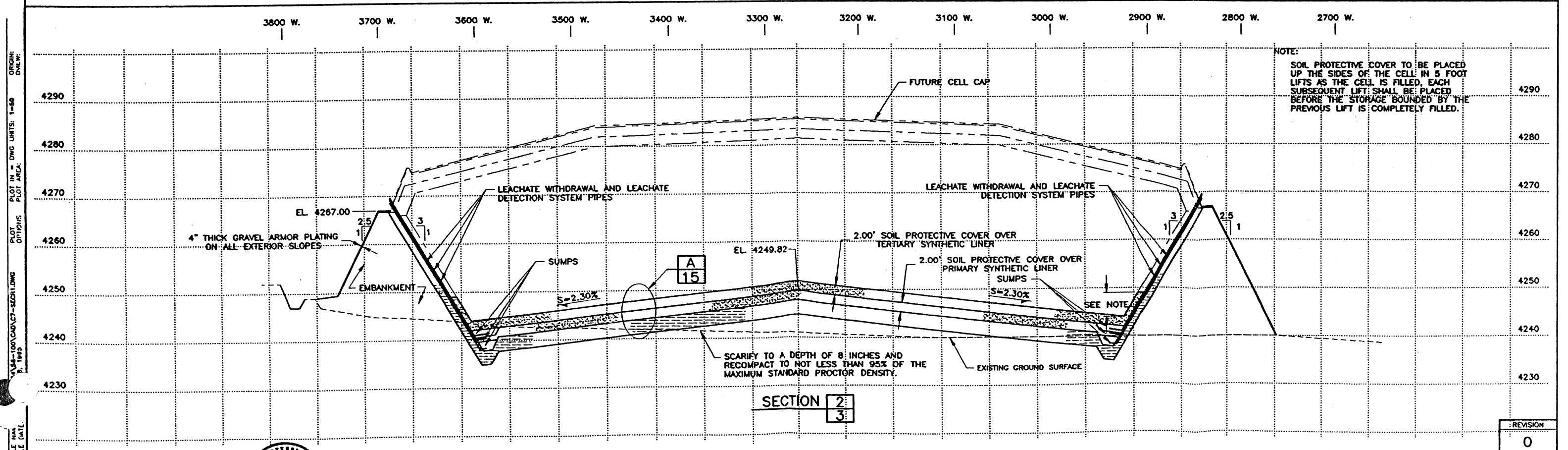
**USPCI**  
A GOLDMAN COMPANY

GRASSY MOUNTAIN FACILITY  
LANDFILL CELL 7  
PLAN VIEW

REVISION	0
SHEET NO.	6
OF	20
84-56-100	



SECTION 1  
3



SECTION 2  
3

FILE NAME: 100/CA07-SECT1.DWG  
 PLOT IN = DWG UNITS: 1=50  
 PLOT AREA:  
 DATE: 11/19/95  
 ORIGIN: DMLR

**H&L**  
ENGINEERS

CONSULTANTS  
ENGINEERS  
  
 MARVIN R. ALLEN

DESIGNED	MPW	3
DRAFTED	RGA	2
CHECKED	MEA	1

SCALE  
HORIZONTAL  
1" = 50'  
VERTICAL  
1" = 10'

VERIFY SCALE  
0" = 1" ON SHEET  
1" = 1" ON SHEET

**USPCI**  
A **CALLDORF** COMPANY

GRASSY MOUNTAIN FACILITY  
LANDFILL CELL 7  
TYPICAL SECTIONS

REVISION	0
SHEET NO.	9
OF	20
64-56-100	